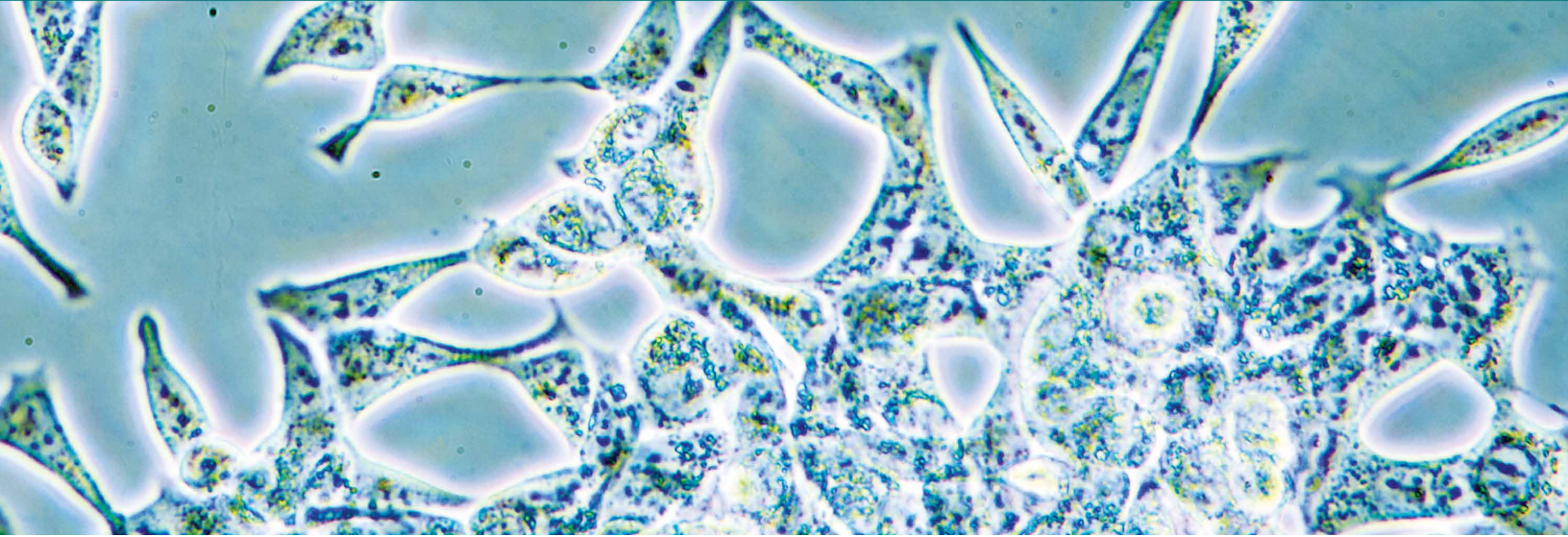


10TH ANNUAL

HOUSTON METHODIST CANCER SYMPOSIUM



Hybrid Conference | Friday, Aug. 12, 2022

8 a.m. – 4:45 p.m.

Presented by the Houston Methodist Dr. Mary and Ron Neal Cancer Center

Visit learn.houstonmethodist.org/cancer-symposium-2022
for more information, or to register.



PROGRAM DIRECTORS: Eric H. Bernicker, MD; and Shilpan Shah, MD

HOUSTON
Methodist[®]
CANCER CENTER



AGENDA

- 7 a.m. Registration
- 8:15 **Welcome: Announcements and Introductions**
Jenny C. Chang, MD
- 8:30 **Role of Genomics in Multiple Myeloma**
Nikhil C. Munshi, MD
- 9:15 Q&A Session
- 9:30 **Overview of Advances in Multiple Myeloma**
Siddhartha Ganguly, MD, FACP
- 10 Q&A Session
- 10:05 Break and Exhibits
- 10:30 **Basic and Translational Research Updates in Multiple Myeloma**
Qing Yi, MD, PhD
- 11 **Supportive Care in Myeloma**
Rebecca Lu, MSN, FNP-C
- 11:30 Q&A Session
- 11:35 **LUNCH KEYNOTE PRESENTATION:**
Climate Change and Cancer
Joan H. Schiller, MD
- 12:35 p.m. Lunch and Exhibits
- 1 **SOLID TUMOR KEYNOTE PRESENTATION:**
Overview of Cancer Chemoprevention
Ming You, MD, PhD
- 1:45 Q&A Session
- 1:55 **Management of Prostate Cancer 2022**
Eleni Efstathiou, MD, PhD
- 2:25 Q&A Session
- 2:30 Break and Exhibits
- 2:45 **Breast Cancer Radiotherapy and Quality**
Waqar M. Haque, MD
- 3:15 Q&A Session
- 3:20 Break and Exhibits
- 3:40 **Abstract Winner Discussions**
- 4:30 Q&A Session
- 4:45 Adjournment

FACULTY

Eric H. Bernicker, MD

Course Co-Director

*Professor of Clinical Oncology, Academic Institute
Diane Harkins Modesett Clinical Academic Scholar
Institute for Academic Medicine
Full Member, Research Institute
Houston Methodist
Weill Cornell Medical College*

Jenny C. Chang, MD

*Emily Herrmann Chair in Cancer Research and
Director, Houston Methodist Cancer Center
Professor of Medicine in Oncology,
Institute for Academic Medicine
Full Member, Research Institute
Houston Methodist
Weill Cornell Medical College*

Eleni Efstathiou, MD, PhD

*Section Chief, Genitourinary Medical Oncology
Houston Methodist Oncology Partners*

Siddhartha Ganguly, MD, FACP

*Carol Cockrell Curran Distinguished Centennial
Chief in Hematologic Oncology,
Dr. Mary and Ron Neal Cancer Center
Professor of Clinical Oncology, Academic Institute
Full Clinical Member, Research Institute
Houston Methodist*

Waqar M. Haque, MD

*Associate Professor, Clinical Radiation Oncology,
Academic Institute
Associate Clinical Member, Research Institute
Houston Methodist
Weill Cornell Medical College*

Rebecca Lu, MSN, FNP-C

*Supervisor, Advanced Practice Provider
Myeloma Research
Department of Lymphoma/Myeloma,
Division of Cancer Medicine
The University of Texas MD Anderson Cancer Center*

Nikhil C. Munshi, MD

*Kraft Family Chair
Director, Basic and Correlative Science,
Jerome Lipper Multiple Myeloma Center
Director, Multiple Myeloma Immune Effector Cell Therapy
Senior Physician
Professor of Medicine, Harvard Medical School
Boston, Massachusetts*

Joan H. Schiller, MD

Keynote Presenter, Lunch Session

*Founding Member,
Oncologists United for Climate and Health (OUCH)
Adjunct Professor, University of Virginia
Board Member, Lung Cancer Research Foundation
Charlottesville, Virginia*

Shilpan Shah, MD

Course Co-Director

*Assistant Professor, Clinical Medicine in Oncology
Weill Cornell Medical College
Adjunct Assistant Professor
Texas A&M University College of Medicine*

Qing Yi, MD, PhD

*Ralph O'Connor Centennial Chair,
Dr. Mary and Ron Neal Cancer Center
Professor of Oncology, Academic Institute
Full Member, Research Institute
Director, Center for Translational Research in
Hematological Malignancies
Associate Director, Cancer Center Basic Research
Programs, Dr. Mary and Ron Neal Cancer Center
Houston Methodist
Weill Cornell Medical College*

Ming You, MD, PhD

Keynote Presenter, Solid Tumor

*Director, Center for Cancer Prevention,
Dr. Mary and Ron Neal Cancer Center
Houston Methodist*

Program Overview

This annual symposium, dedicated to the science and clinical care of solid and hematologic malignancies, brings together Houston Methodist scientists and physicians from a broad spectrum of fields, including basic, clinical and epidemiological research. A wide range of topics will be covered, from innovative translational science to clinical updates with strategies for implementation in current clinical practice. The program will provide education focused on improving patient care, research collaboration and leading medicine.

Target Audience and Educational Objectives

Physician scientists, practicing oncologists, advanced nurse practitioners and physician assistants, oncology nurses, residents, fellows, medical students, allied health personnel and clinical research associates will benefit from this course.

Upon completion of this course, the participant should be able to:

- Describe the role of genomics in multiple myeloma
- Discuss new modalities of therapy in multiple myeloma
- Discuss the importance of supportive care in patients with multiple myeloma

Accreditation and Credit Designation Statements

Physicians

Houston Methodist is accredited by the Accreditation Council for Continuing Medical Education (ACCME) to provide continuing medical education for physicians.

Houston Methodist designates this live activity for a maximum of 6.75 *AMA PRA Category 1 Credits*[™].

Physicians should claim only the credit commensurate with the extent of their participation in the activity.

Nurses

Houston Methodist is accredited as a provider of nursing continuing professional development by the American Nurses Credentialing Center's Commission on Accreditation.

Houston Methodist will provide 5.91 Continuing Nursing Education contact hours for this activity. Participants must attend the activity in its entirety and complete the continuing nursing education evaluation.

Educational Methods

Didactic Lectures, Question and Answer Sessions

Disclosure

This CE activity is designed for use by health care professionals for educational purposes only. Information and opinions offered by the contributors represent their viewpoints. Conclusions drawn by the participant should be derived from careful consideration of all available scientific information. Prescription information and use of medical devices should be undertaken only after confirmation of information by consulting the FDA-approved uses and information.

Houston Methodist makes every effort to have accurate information presented; no warranty, expressed or implied, is offered. The participant should use his/her clinical judgment, knowledge, experience and diagnostic decision-making before applying any information, whether provided here or by others, for any professional use.

COVID-19 Disclaimer

The format of this activity is subject to change due to extenuating circumstances resulting from the COVID-19 pandemic. Should the activity be cancelled or changed to a new format (i.e. virtual only or some combination of virtual/in-person), Houston Methodist may cancel or modify your registration accordingly. We will make every effort to notify you of a change of format and your registration status before the activity date. Thank you for your understanding.

For Further Information, Contact

Houston Methodist Office of Continuing Medical Education

6670 Bertner Ave., R2-216
Houston, TX 77030

Phone: 713.441.4971

Email: cme@houstonmethodist.org

Visit houstonmethodist.org/cme for information about other Houston Methodist CME activities.