

HOUSTON METHODIST NEUROLOGICAL INSTITUTE  
PRESENTS

15th Annual

# ADVANCES IN NEUROLOGY

**Hybrid Conference** ■ Sept. 23-24, 2022

8 a.m. – 4:45 p.m.

Visit [learn.houstonmethodist.org/neurology-2022](https://learn.houstonmethodist.org/neurology-2022)  
for more information and to register.



### Course Co-Directors

Rajan R. Gadhia, MD; and Eugene C. Lai, MD, PhD

### Program Overview

There have been significant advances in the diagnosis and treatment of many neurological diseases. Attempts to cover these scientific advances have been made through peer-reviewed journals, national and international society meetings, and consensus statements. This program will emphasize evidence-based strategy for the current treatment of neurological disorders and cutting-edge research in novel therapeutics.

HOUSTON  
**Methodist**<sup>®</sup>  
NEUROLOGICAL INSTITUTE

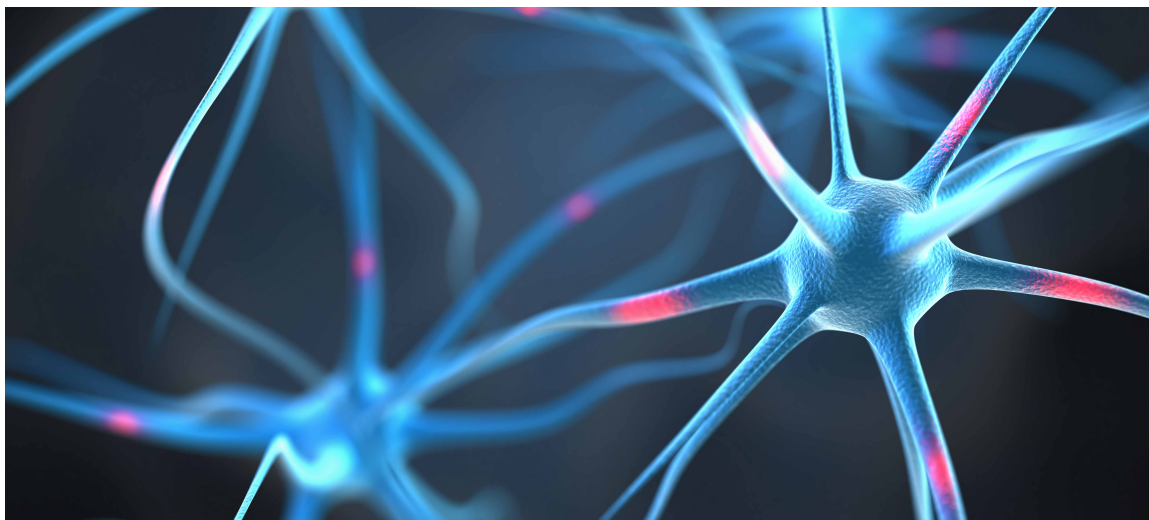




**Houston Methodist Neurological Institute** offers unparalleled inpatient and outpatient care for neurological disorders. Our physicians are among the finest specialists in the nation in multiple aspects of neurological care, offering both general and subspecialty expertise in state-of-the-art facilities. The Neurological Institute is recognized as a research leader, with teams involved in developing new treatments, therapies, drugs, and clinical trials for stroke, Parkinson's disease and other movement disorders, Alzheimer's disease and related dementias, ALS, epilepsy, brain and spinal tumors, aneurysms, neuromuscular diseases and other disorders. Through our fully accredited residency programs, institute physicians are training the best and brightest future neurologists and neurosurgeons.

## FRIDAY, SEPT. 23

- 7 a.m. **Registration and Breakfast**
- 8 **Welcome and Introductions**  
*Rajan R. Gadhia, MD; and Eugene C. Lai, MD, PhD*
- 8:05 **Insights and Experiences – The Journey of a Giant**  
*Stanley H. Appel, MD*
- 8:55 **Mechanism and Consequences of De- and Dys-myelination**  
*Jun Li, MD, PhD, FANA, FAAN*
- 9:45 Break and Exhibits
- 10:05 **Post-COVID Presentations of Neuromuscular Diseases**  
*Sheetal Shroff, MD*
- 10:55 **Advances in Therapies for Myasthenia Gravis**  
*Ericka P. Greene, MD*
- 11:45 Lunch and Exhibits
- 1 p.m. **Announcements and Introductions**  
*Rajan R. Gadhia, MD; and Eugene C. Lai, MD, PhD*
- 1:05 **The Next Frontier in Stroke: Neuro-rehabilitation and Neuro-recovery**  
*Timea Hodics, MD*
- 1:55 **Advances in Stem Cell Transplant and Neuro-recovery in Multiple Sclerosis**  
*Flavia Nelson, MD*
- 2:45 Break and Exhibits
- 3:05 **Advances in Medical Management of Epilepsy**  
*Amit Verma, MD*
- 3:55 **Advances in Surgical Treatment of Epilepsy**  
*Brandy Ma, MD, MPH*
- 4:45 Adjournment



## SATURDAY, SEPT. 24

- 7 a.m. **Registration and Breakfast**
- 8 **Welcome and Introductions**  
*Rajan R. Gadhia, MD; and Eugene C. Lai, MD, PhD*
- 8:05 **Advances in Neuroimaging: Predicting Disability from Onset**  
*Joseph C. Masdeu, MD, PhD*
- 8:55 **Advances in Managing Neuroinflammation in Alzheimer's Disease**  
*Alireza Faridar, MD*
- 9:45 Break and Exhibits
- 10:05 **Advances in Neuroendovascular Approach in Acute Ischemic Stroke**  
*Thabele Lezlie-Mazwi, MD*
- 10:55 **Advances in Stroke Recovery – A Physical Medicine Rehabilitation Perspective**  
*Nicole Mazwi, MD*
- 11:45 Lunch and Exhibits
- 1 p.m. **Announcements and Introductions**  
*Rajan R. Gadhia, MD; and Eugene C. Lai, MD, PhD*
- 1:05 **Advances in Vertigo and Neuro-Otology**  
*Terry Fife, MD*
- 1:55 **Advances in Headache and Pain Management, Living Day to Day**  
*Julia L. Jones, MD*
- 2:45 Break and Exhibits
- 3:05 **Advances on Sleep, Psychosis, and Other Nonmotor Features of Parkinson's Disease**  
*William G. Ondo, MD*
- 3:55 **Life After Hospitalization with Parkinson's Disease: What Next?**  
*Eugene C. Lai, MD, PhD*
- 4:45 Adjournment

## Course Directors

### **Rajan R. Gadhia, MD**

Assistant Professor of Neurology  
Program Director, Vascular Neurology Fellowship Program  
Director, HMM Acute TeleNeurology  
Medical Director, Houston Methodist Concussion Center  
Eddy Scurlock Stroke Center  
Stanley H. Appel Department of Neurology  
Weill Cornell Medical College

### **Eugene C. Lai, MD, PhD**

Robert W. Hervey Distinguished Endowed Chair  
for Parkinson's Disease Research and Treatment  
Professor of Neurology and Neuroscience  
Stanley H. Appel Department of Neurology  
Weill Cornell Medical College

## Guest Faculty

### **Terry Fife, MD**

Director of the Balance Disorders and Vestibular  
Neurology Program  
Professor, Department of Neurology  
Barrow Neurological Institute  
Phoenix, Arizona

### **Thabele Lezlie-Mazwi, MD**

Professor and Chair, Department of Neurology  
Warren and Jermaine Magnuson Endowed Chair  
in Medicine for Neurosciences  
Co-Director, Neurosciences Institute  
UW Medicine | University of Washington  
Seattle, Washington

### **Nicole Mazwi, MD**

Director of Stroke Rehabilitation  
Department of Rehabilitation Medicine  
UW Medicine | University of Washington  
Seattle, Washington

### **Flavia Nelson, MD**

Professor of Neurology  
Chief, CNS Autoimmune Disorders Division Director,  
Multiple Sclerosis Center of Excellence  
Don Soffer Clinical Research Center  
University of Miami, Miller School of Medicine  
Miami, Florida

## Houston Methodist Faculty

### **Stanley H. Appel, MD**

Peggy and Gary Edwards Distinguished Endowed Chair  
for ALS Research  
Director, Johnson Center for Cellular Therapeutics  
Co-Director, Houston Methodist Neurological Institute  
Weill Cornell Medical College

### **Alireza Faridar, MD**

Assistant Professor of Neurology  
Weill Cornell Medical College

### **Ericka P. Greene, MD**

The Sumner Family Distinguished Chair  
in Neuromuscular Research  
Professor of Neurology  
Vice Chair of Education  
Program Director, Neurology and Neuromuscular  
Medicine Residency  
Stanley H. Appel Department of Neurology  
Weill Cornell Medical College

### **Timea Hodics, MD**

Neuroimaging, Vascular Neurology, Neurology  
Eddy Scurlock Stroke Center  
Stanley H. Appel Department of Neurology

### **Julia L. Jones, MD**

General Neurology Division  
Stanley H. Appel Department of Neurology

### **Jun Li, MD, PhD, FANA, FAAN**

Chair, Stanley H. Appel Department of Neurology

### **Brandy Ma, MD, MPH**

Assistant Professor of Neurology  
Weill Cornell Medical College

### **Joseph C. Masdeu, MD, PhD**

Graham Family Distinguished Endowed Chair  
in Neurological Sciences  
Director, Nantz National Alzheimer Center  
and Neuroimaging  
Professor of Neurology  
Stanley H. Appel Department of Neurology  
Weill Cornell Medical College

### **William G. Ondo, MD**

Professor of Neurology  
Stanley H. Appel Department of Neurology  
Director, Movement Disorders Clinic  
Weill Cornell Medical College

### **Sheetal Shroff, MD**

Assistant Professor of Neurology  
Neurology, Neuromuscular Medicine and  
Electrodiagnostic Medicine  
Stanley H. Appel Department of Neurology  
Weill Cornell Medical College

### **Amit Verma, MD**

Professor of Neurology  
Program Director, Clinical Neurophysiology Residency  
Stanley H. Appel Department of Neurology  
Weill Cornell Medical College

## Target Audience and Educational Objectives

This conference is designed for physicians, nurses, nurse practitioners, physician assistants, physical therapists, occupational therapists, speech-language therapists and residents/fellows in the neurological sciences will benefit from this course.

Upon completion of this course, the participant should be able to:

- Apply new medical and surgical therapies for the treatment of neurological diseases.
- Discuss new and future therapies for stroke, epilepsy, demyelinating diseases, headaches, Parkinson's disease, and neuromuscular diseases.
- Describe the diagnosis and treatment of dementias, vestibular dysfunction, stroke, and complex headache presentations.

## Accreditation and Credit Designation Statements

### Physicians

Houston Methodist is accredited by the Accreditation Council for Continuing Medical Education (ACCME) to provide continuing medical education for physicians.

Houston Methodist designates this live activity for a maximum of 13.25 *AMA PRA Category 1 Credits™*. Physicians should claim only the credit commensurate with the extent of their participation in the activity.

### Nursing

Houston Methodist is accredited as a provider of nursing continuing professional development by the American Nurses Credentialing Center's Commission on Accreditation.

Houston Methodist will award up to 12.83 nursing professional development contact hours for this activity. Participants must attend one or both entire days of the activity and complete the evaluation.

### Social Workers

Social Work CEUs are accredited by the Texas State Board of Social Worker Examiners. Day One attendance is approved for 2.5 CEU hours. Day Two attendance is approved for 4.25 CEU hours. Attendance of both days is approved for 6.75 CEU hours.

### ASET – The Neurodiagnostic Society

This activity is pending approval for ASET Continuing Education credits.

## Occupational Therapists

This activity has been approved for 13.25 hours of OT Education by The Texas Board of Occupational Therapy Examiners.

## Physical Therapists

This activity has been approved by the Texas Board of Physical Therapy Examiners for 13.25 CCUs for PTs and PTAs.

## Speech-Language Pathologists

This program has been approved for 13.25 clock hours of continuing education credit by the Texas Speech-Language-Hearing Association (TSHA).

## Disclosure

This CE activity is designed for use by health care professionals for educational purposes only. Information and opinions offered by the contributors represent their viewpoints. Conclusions drawn by the participant should be derived from careful consideration of all available scientific information. Prescription information and use of medical devices should be undertaken only after confirmation of information by consulting the FDA-approved uses and information.

Houston Methodist makes every effort to have accurate information presented; no warranty, expressed or implied, is offered. The participant should use his/her clinical judgment, knowledge, experience and diagnostic decision-making before applying any information, whether provided here or by others, for any professional use.

## COVID-19 Disclaimer

The format of this activity is subject to change due to extenuating circumstances resulting from the COVID-19 pandemic. Should the activity be cancelled or changed to a new format (i.e. virtual only or some combination of virtual/in-person), Houston Methodist may cancel or modify your registration accordingly. We will make every effort to notify you of a change of format and your registration status before the activity date. Thank you for your understanding.

## Office of Continuing Medical Education

713.441.4971 ▪ [cme@houstonmethodist.org](mailto:cme@houstonmethodist.org)

Visit [houstonmethodist.org/cme](https://houstonmethodist.org/cme) for information about other Houston Methodist CME activities.