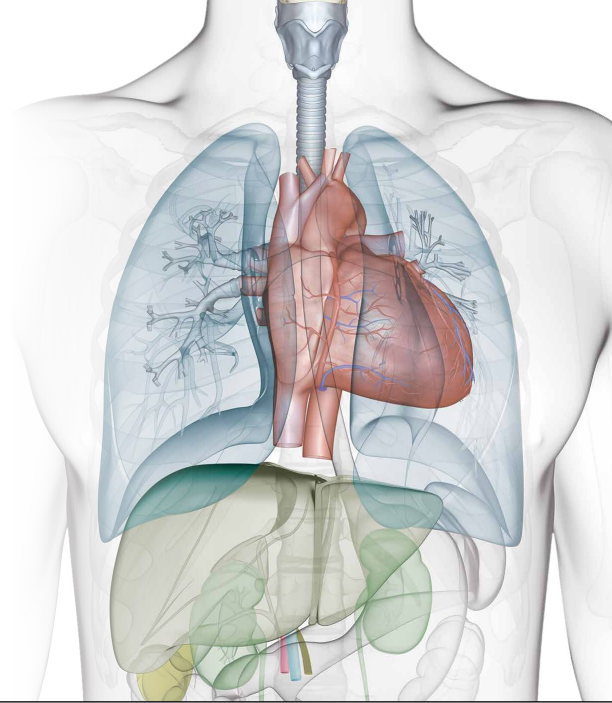


Houston Methodist J.C. Walter Jr. Educational Series

# GEORGE P. NOON CONFERENCE 2024

**NOV. 4-8** and **NOV. 11**



## **Monday, Nov. 4**

**8 a.m. – Noon | Regulatory Aspects of Transplantation Symposium**

Scientific Planning Committee: Scott Lindberg, MD, FASA;  
Susan Zyllicz, BSN, MHA, CCTC and Laurie Loza, MBA, BSN, CCTC

**1-5 p.m. | Advanced Lung Disease & Transplantation Symposium**

Scientific Planning Chair: Howard J. Huang, MD

**Tuesday, Nov. 5 | 7:30 a.m. – 5 p.m.**

**Wadi N. Suki Symposium: New Horizons in Kidney Disease,  
Dialysis and Transplantation**

Course Director: A. Osama Gaber, MD, FACS

Scientific Planning Chair: Wadi N. Suki, MD, FACP

**Wednesday, Nov. 6**

**8 a.m. – 5 p.m. | Carol & Burt Keenan Liver Symposium:  
Changing the Landscape of Transplantation**

Course Director: R. Mark Ghobrial, MD, PhD, FACS, FRCS(Ed)

**3-5 p.m. | NEW! Hepatobiliary and Pancreatic Surgery Session**

Scientific Planning Chair: Yee Lee Cheah, MD, FACS

**Thursday, Nov. 7 | 8 a.m. – 4 p.m.**

**Research and Transplantation Symposium**

Scientific Planning Committee: Xian C. Li, MD, PhD and

Ashton Connor, MD, PhD

**Friday, Nov. 8 | 8 a.m. – 5 p.m.**

**Advanced Heart Failure Symposium**

Scientific Planning Chair: Ashrith Guha, MD, MPH, FACC

**Conference Director**

R. Mark Ghobrial, MD, PhD, FACS, FRCS(Ed)



Visit [learn.houstonmethodist.org/GPN-2024](https://learn.houstonmethodist.org/GPN-2024)  
for more information and to register.

## **Monday, Nov. 11**

**8 a.m. – Noon | NEW! Pioneering Integrative  
Medicine and Behavioral Health Strategies in Surgical  
Care Symposium**

Scientific Planning Committee: A. Osama Gaber, MD, FACS  
and Guillermo Torre-Amione, MD, PhD

**1-5 p.m. | The Future of Transplant Conference:  
Increasing Awareness in Diversity**

Scientific Planning Chair: Sudha Kodali, MD, MSPH

### **Accreditation Statements**

#### *Physicians*

Houston Methodist is accredited by the Accreditation Council for Continuing Medical Education (ACCME) to provide continuing medical education for physicians.

These live activities have been approved for *AMA PRA Category 1 Credits™*.

#### *Transplant Coordinators*

Category I Continuing Education Points for Transplant Certification (CEPTCs) have been applied for through the American Board for Transplant Certification (ABTC).

#### *Nurses*

Nursing education credits have been applied for through the American Nurses Credentialing Center's Commission on Accreditation.

#### *Social Workers*

Social Work education credits have been applied for through the Texas State Board of Social Work Examiners.

